



E.B.HORSMANDATACOM

Data Communications & Network Division

Your Guide to DATA COMMUNICATIONS

EBH DATACOM DIVISION

BC: Burnaby • Campbell River • Courtenay • Cranbrook • Dawson Creek • Duncan • Kamloops • Langley
Parksville • Penticton • Prince George • Richmond • Surrey • Terrace • Vernon • Victoria • Williams Lake

AB: Calgary • Edmonton

SK: Saskatoon

datacom@ebhorsman.com | [888.HORSMAN](tel:888.HORSMAN) | ebhorsman.com



Platinum member



- 3 Data Wire & Cable
- 4 Patch Cords & Patch Panels
- 5 Copper Connectors
- 6 Fibre Connectors
- 7 Cable Management
- 8 Data Installation Tools
- 9 Enclosures, Racks, & Cooling
- 11 Uninterruptible Power Supply (UPS)
- 12 Power Distribution
- 13 Plates & Brackets
- 14 Residential Networking Components
- 15 AV & Home
- 16 Residential & Commercial Automation
- 17 Cameras & Monitors
- 21 Industrial Communications
- 22 Cable Table

Datacom Solutions

There's more data solutions and technology available than ever before - can your equipment handle it all? E.B. Horsman & Son has the inventory and technical expertise you need to build a network infrastructure for the future with 24/7 uptime for both rudimentary to large enterprise applications.

We provide the following solutions:

Residential Communications



Datacom infrastructure is imperative to the success of connected homes. All smart devices within a network must work cohesively with each other, from smart controllers and wireless access points to Ethernet switches, cabling, and connectors. All components must be compatible with today's equipment as well as tomorrow's emerging technologies.

Commercial Communications



The expertise of designing a commercial infrastructure is critical to today's as well as tomorrow's application and data rates. As new end-to-end technologies are developed to exploit the availability of high-speed, high capacity networks, maintaining infrastructure integrity is critical to the company's success.

Industrial Communications



Industrial Communication Networks are designed and built to handle real-time control and data integrity while installed in large plants that are potentially operating in harsh environments. This automation and networking technology enables greater energy efficiency, flexible production capabilities, and digital manufacturing.

DATAKOM TECHNICAL CAPABILITIES

[Learn More](#)

Product Advice

Technologies have continued to change and our specialists can offer you advice on the best solutions for your needs.

Quotations

Our team is available to build a quote for your client or bid package so you can feel confident you're offering a modern communications network with high capacity and minimal disruption.

Design

We have a team of experienced professionals that will help you design the best solution for your residential, commercial and industrial projects.

Training

With the evolution of technology, we want you to be a leader in your specialty. Our in-house facilities and manufacturer partners work together to offer you application and product specific training.

Installing & Programming

Our network of integration partners will provide you with all the help you need to install and program all the technologies for optimal efficiency.

After Sales Support

Our team guarantees continuous support throughout your project and products lifetime. Call us regarding any questions that arise and our team will be happy to assist with any post installation issues.

Top Manufacturers

[View All](#)





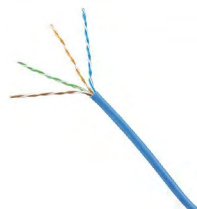
[View Online](#)



Cat 5e, Cat6, Cat6A

Part # UTP5x, UTP6x, IUTAx-MxS

- Supports 10BASE-T, 100BASE-T, 1000BASE-T and 10GBASE-T Ethernet
- Supports power over Ethernet (PoE+) applications
- Available in plenum, riser, CM, IEC 60332-1 (Low-Smoke Zero Halogen) and PVC cable jackets
- Tested & verified to exceed ANSI/TIA, IEEE, & ISO/IEC



[View Online](#)



Cat6, Cat6A

Part # PUP6C04xxF, PUP6AM04xx

- Supports 10BASE-T, 100BASE-T, 1000BASE-T and 10GBASE-T Ethernet
- Supports power over Ethernet (PoE+) applications
- Available in Plenum, Riser, CM, IEC 60332-1 (Low-Smoke Zero Halogen) and PVC cable jackets
- Tested & verified to exceed ANSI/TIA, IEEE, & ISO/IEC



[View Online](#)

General Cable

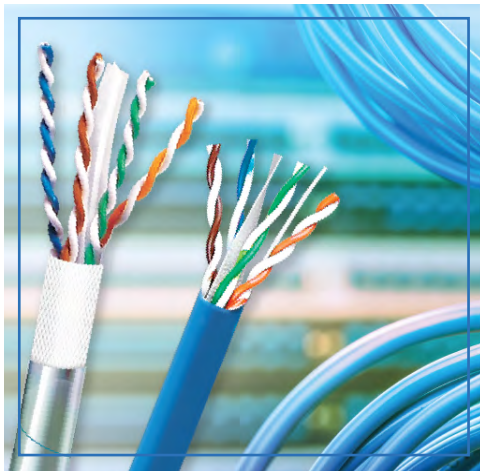
A Brand of Prysmian Group



Cat 5e, Cat6, Cat6A

Part # 5133xxxE, 5131xxxE, 71338xxx...

- Supports 10BASE-T, 100BASE-T, 1000BASE-T and 10GBASE-T Ethernet
- Supports power over Ethernet (PoE+) applications
- Available in plenum, riser, CM, IEC 60332-1 (Low-Smoke Zero Halogen) and PVC cable jackets
- Tested & verified to exceed ANSI/TIA, IEEE, & ISO/IEC



[View Online](#)



General Cable

A Brand of Prysmian Group



Fibre Optics

Part # BE0xx1ANU.BK

- Tight buffer distribution cable
- Common 6F & 12F OFNP stocked
- 6 & 12 OM3
- Used in Intrabuilding backbone and horizontal installations for riser (OFNR) or Plenum (OFNP)

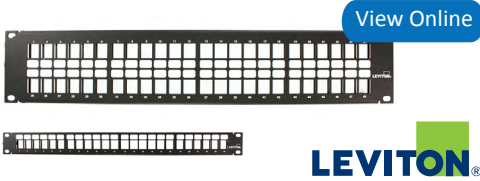
[View Online](#)



Cat 5e, Cat6

Part # WICH210xBL

- Bagged in plastic plus plastic handles & binding straps
- Foot marking every two feet
- Jacket colour and part number clearly marked
- easy pull pack or reel
- CSA & CUL Approved
- FT4 Fire Rated



Rackmount Patch Panels

Part # 49255

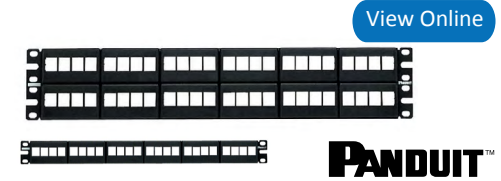
- Quickport style: Mix voice, data, video, audio in a single panel
- Standard 24-port & 48-port readily available
- Silk-screened port numbers on panel front
- Flat panels' traditional profile
- 12-port vertical wall mount version available



QuickPort Angled Patch Panel

Part # 49256-Hxx

- Available in 48-port and 24-port
- Customizable design for fibre and copper applications
- Angled design for easy cable routing into vertical cable managers
- Fits into all industry-standard 19" racks & cabinets



Rackmount Patch Panels

Part # NKFP24Y, NKFP48Y

- NetKey style Keystone patch panels
- Modular patch panels accept all Keystone modules
- Mounts to standard ANSI/TIA 19" racks



Rackmount Patch Panels

Part # NK6XPP, NK6PP, NK5EPP

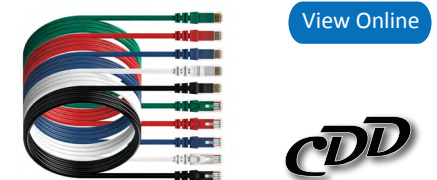
- Available in Cat5e, Cat6 & Cat6A
- Flat metal 110-Style
- Includes color code for T568A & T568B
- Punchdown patch panels
- Mounts to standard ANSI/TIA 19" racks



Patch Cords

Part # 6AS10, 6D460, 5D460

- Available in Cat5e, Cat6, Cat6A
- Slim-line boot for narrow profile
- Strain-relief boot ensures long-term network performance
- Snagless Tab prevents tab breakage



Patch Cords

Part # WICD0x

- Light weight with new design boot
- 550Mhz transfer rate
- High performance Cat6
- Slim size: 5mm diameter
- Exceptional speed and reliability
- Compatible with 10/100/1000 Ethernet Networks


[View Online](#)


Gigamax UTP

Part # 5G108-Rx5

- Light commercial Cat5e applications
- Dual wiring code label allows connector to be wired to either T568A or T568B
- Individual port configurability (spec flexibility)
- Robust one-piece, lead-frame design
- Narrow connector (high port density in a small area)


[View Online](#)


eXtreme UTP

Part # 5G110-Rx5, 61110-Rx6, 6110G-Rx6

- Commercial Cat5e, Cat6, and Cat6A applications
- Patented retention force technology (RFT)
- Alien crosstalk suppressed by cone of silence, and new printed circuit board
- Pair separation tower (PST) design
- Patented, dual-layer wiring label


[View Online](#)


Atlas-X1 UTP & Shielded

Part # 5ExJK, 61xJK, 6AxJK, 81SJK

- Demanding Cat5e, Cat6, Cat6A, and Cat8 applications
- Patented retention force technology (RFT)
- Third-party verified to exceed all margins
- Tool-free termination and re-termination
- Short connector design for superior bend radius


[View Online](#)


Mini-Com UTP/Shielded

Part # CJ5E88TG, CJ(S)688TG, CJ(S)6X88TG

- Commercial Cat5e, Cat6, and Cat6A applications
- Patented Giga-TX technology for jack terminations
- Gold plated contacts
- MaTriX technology provides superior suppression of alien crosstalk


[View Online](#)


NetKey UTP

Part # NKP5E88M, NK688M, NK6X88M

- Meets standards for Cat5e, Cat6, and Cat6A
- Snaps in and out of Keystone openings for easy moves, adds, and changes
- Performance tested and individually serialized for future traceability


[View Online](#)


Modular Plug

Part # FP6X88MTG-X

- TX6A
- Category 6A UTP Field Terminable RJ45 Plug
- Simple-to-attach plug for field termination of 4-pair unshielded twisted pair cable
- Includes EGPT termination tool


[View Online](#)
LEVITON®


FastCAM Fibre Optic

Part # 49991-xLC, 49991-xSC, 49991-xST

- Visual fault locator for LC, SC, & ST connectors
- Pre-polished, field-installable connectors
- Require no polishing or epoxy curing
- Mechanical termination with molded v-groove tech
- Available in multi-mode, laser optimized multi-mode, and single-mode connector styles


[View Online](#)
PANDUIT™


OptiCam Fibre Optic

Part # FLC, FSC, FST

- Quick installation
- Patented re-termination capability provides yield rates approaching 100%
- Factory pre-polished fibre endface
- Cam activated fibre and buffer clamp mechanism


[View Online](#)
LEVITON®


FastCam Termination Kit

Part # 49800-MSK

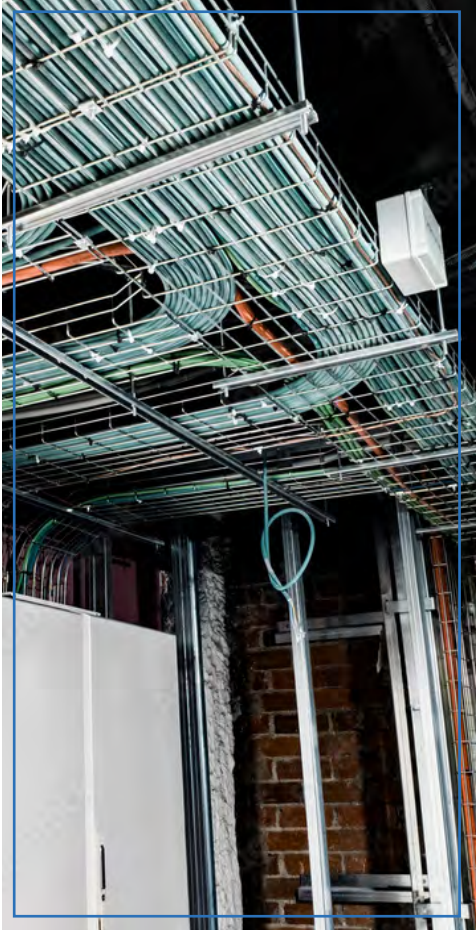
- Compact, ergonomic design
- High precision cleaves
- 3-action operation
- Includes the cleaver, lint free dry wipes, alcohol pads, and a fibre stripper
- Single-mode or multi-mode use


[View Online](#)
PANDUIT™


OptiCam Termination Kit

Part # FOCTT2-BKIT

- Step by step visual guidance
- Kit ensures certainty of terminations and reduces the number of rejected connectors and terminations
- Smartphone app lets users create project files



[View Online](#)



ABB



Steel Wire Basket Tray

Part # ETQx0yySE10

- Installs in less time than conventional tray with no complex layouts, a minimum of tools and less wasted material
- Wide range of tray widths
- Continuous airflow prevents overheating and the build-up of dust and contaminants

[View Online](#)



BRADY
WHEN PERFORMANCE MATTERS MOST™



Bluetooth Label Printer

Part # M211

- Design, preview & print labels right from mobile app
- Maximize on-site efficiency — import data, save and share files with ease
- Print over 300 labels on a single charge using advanced Li-Ion battery technology
- Compact and lightweight (1.2lbs) design

[View Online](#)



ELASCO PRODUCTS



Cable Gaurd Ramp

Part # MG3200-GLOW

- Elasco Heavy Duty Three Channel Cable Guard offering 2 inches in channel width with Glow in the Dark Feature
- Reduce vehicle drive-over damage to electrical cables, hoses and pipes

[View Online](#)



GRIFFLE



UniGrip - Basket Tray Adapter

Part # UG2-CBA

- Release button allows for simple adjustment
- Central cable exit
- Designed for fast suspension of basket tray and eliminates requirement for channel bearers
- Load rating: up to 120 lbs / 55 kg with 5:1 SW



[View Online](#)



Punch Down Tool

Part # 35-485

- Seat and cut cable terminations effortlessly
- Full 110 & 66 blades for data and voice applications
- Impact-absorbing cushioned grip reduces operator stress for high volume installers



[View Online](#)



Crimping Tool

Part # 30-696

- Pro Level crimping tool for RJ-45 (8P8C) and RJ-11 (6P6C, 6P4C, 6P2C) modular plugs
- Ratchet allows for consistent, high quality connections
- Blade for cutting cable and stripping cable jackets
- Compatible with CAT5e/6 data plugs
- Works with most shielded modular plugs CAT5e/6



Tone and Probe Tool

Part # 711K

- Fast, accurate wire identification
- Sends tone to identify wires
- Three distinct tone signatures
- High & low power output settings
- Polarity indication



[View Online](#)



Cable Tester Kit

Part # VDV 501-851

- Cable tester tests voice (RJ11/12), data (RJ45) and video (coax F-connector) terminated cables with clearly defined results
- Measure cable length up to 2000 feet
- Test for open, short, miswire or split-pair faults
- Multiple style tone generator



[View Online](#)



Data Cable Certifier

Part # R16100x

- Easy to use cable certifier that meets existing TIA and ISO/IEC performance requirements
- Efficient data management software
- Professional reporting
- Send test data from anywhere using the free app



Fusion Splice Kit

Part # 910FS

- Designed to meet virtually any FTTx installation – indoors and out
- P2P installations including backhaul, cellular, & LAN
- Core alignment - Minimizes splice losses
- Compatible with Greenlee® splice-on connectors
- 250 Splice/ Shrink cycles per battery charge



Distributor Racks Data Rack

Part # DK 7445.000

- Optimum accessibility from all sides during assembly and installation
- Extensive mobility when using twin castors
- Sheet steel



[View Online](#)

2-Post Open Frame Rack

Part # R2-44S or DRR-44

- Fully welded all steel construction, ships assembled and ready to install
- Heavy duty 3/8" thick steel base
- 10-32 threaded front and rear, with numbered spaces
- Seismic certified for strength and reliability



[View Online](#)

Four Post Open Frame Rack

Part # R412, R4CN

- Designed to accommodate deeper, heavier components than a two post frame rack
- Strong steel construction
- Two styles available: 12-24 threaded rackrail or cage nut rackrail
- 90mm square, three lensing options



[View Online](#)

22" Wide Enclosure

Part # ERK Series

- Economical standalone rack with solid sides
- Gangable to create partitioned multi-bay installations
- Seismic certified to protect your components



FlatBox

Part # 7507xxx

- Housing that may be disassembled and can be used as a wall-mounted or floor-standing enclosure
- Tool-free quick mounting
- Viewing window: Single-pane safety glass, 3 mm
- Carbon steel



[View Online](#)

Network Enclosure TS IT

Part # 5509xxx

- High load capacity
- Tool-free installation
- Intelligent cable management
- Fast side panel assembly
- Pre-configured complete packages available




[View Online](#)

Middle Atlantic Products
A brand of **legrand**



Pre-Configured Rack System

Part # RCS Series

- Completely assembled at the factory
- Perfect for audio/ video equipment
- Ships with pre-installed accessories to save contractors' time
- Exceptional quality and value
- Available in 4 sizes: 18U, 27U, 35U, 42U


[View Online](#)

Middle Atlantic Products
A brand of **legrand**



Swing Out Wall Rack

Part # EWR Series, DWR Series

- Pivoting, sectional wall cabinet
- Unparalleled quality
- Ideal for use in both secured and unsecured areas
- Economical solution for smaller systems



VERTIV



DCE Rack System

Part # DCE

- Welded steel frame
- Leveling feet for easy adjustment
- Split locking side panels
- Tool-less removable doors, field reversible
- 12 gauge powder coated RAL 7021 (Black) or RAL 7035 (Light Grey) versions available


[View Online](#)

RITTAL



Wall-mounted Blue e+ AC

Part # 318xxxx, 330xxxx, 332xxxx ...

- Constant temperature inside enclosure
- Active speed-governed circuit components
- Component-friendly cooling for long service life
- Remote monitoring via Ethernet
- For environments ranging from -20°C to +60°C
- UL Type 12 and 3R


[View Online](#)

RITTAL



Enclosure Filter Fan

Part # 323xxxx, 324xxxx

- Fast tool-less assembly with fast clip on mounting
- Air throughput from 20 m/h to 700 m/h
- Quick filter mat changes
- Minimal installation depth
- Optimum airflow distribution inside the enclosure
- IP54 standard


[View Online](#)

RITTAL



Roof-mounted Cooling Unit

Part # SK 3301.800

- Even air distribution in front of the 482.6 mm (19") level
- Cooling of IT equipment
- Supports front-to-back air routing typical of IT applications
- Control of the server air infeed temperature

[View Online](#)



GXT5 Lithium-Ion UPS

Part # GXT5LI

- Lithium-Ion UPS batteries last up to 3x longer than traditional VRLA batteries
- 5-year warranty on UPS and batteries
- Low total cost of ownership (TCO) with fewer or no battery replacements over its lifetime

VERTIV GXT5 UPS WITH LITHIUM-ION TECHNOLOGY

The GXT5 Lithium-Ion double conversion online uninterruptible power supply (UPS) provides both the highest level of power conditioning and battery backup for business-critical IT equipment in the event of an unanticipated loss of power or an unprecedented power surge.

The GXT5 Lithium-Ion UPS protects against the widest range of power fluctuations and automatically switches to battery backup when power loss is detected. With a 0.9 or better output power factor (PF) and no transfer time to operate on battery, you can ensure your most critical assets are protected.

Applications

The GXT5LI is ideally suited for environments such as financial institutes, data centers, education facilities, government agencies, healthcare institutes and in retail with:

- Mission Critical Applications and Systems • Network Workstations • Servers • IDF/Network Closets
 • Large Network Peripherals • PoE & VoIP, Gigabit Switches • Computer Rooms • Network Storage Devices

[View Online](#)



Desktop UPS

Part # PSA5

- Protects televisions, desktop computers, gaming consoles, workstations, networks/routers, surveillance & other important electronics
- Provides backup power and protection during damaging surges, spikes or power outages
- 3 year full unit and battery warranty

[View Online](#)



PS15 Lithium-Ion UPS

Part #PS15

- 2x battery life
- 5 year standard warranty on UPS and batteries
- Quicker recharge time
- Up to 10x more discharge cycles
- Long runtime

[View Online](#)



Battery Back Up

Part # GXT5- 48VBATT

- 48V, 9Ah external expansion battery and cabinet
- 500VA to 2kVA rack or tower UPS system
- Can be added as needed for extended run time



Basic Horizontal PDU

Part # VP9562, VP9563, VP9571A

- Reliable, space saving, and cost-effective rack power distribution
- Remote connectivity
- Small footprint and low profile breakers
- Standard three-year warranty, upgraded to five years with product registration

[View Online](#)



A brand of **legrand**



Horizontal PDU

Part # PD-815R-PL

- Rear distribution outlets with front status pilot light
- Includes surge and spike protection, as well as EMI filtering
- Occupies one rackspace
- 9 foot cord



Basic Vertical PDU

Part # VP7541, VP9567

- Reliable, space saving, and cost-effective rack power distribution
- Remote connectivity
- Small footprint and low profile breakers
- Standard three-year warranty, upgraded to five years with product registration

[View Online](#)



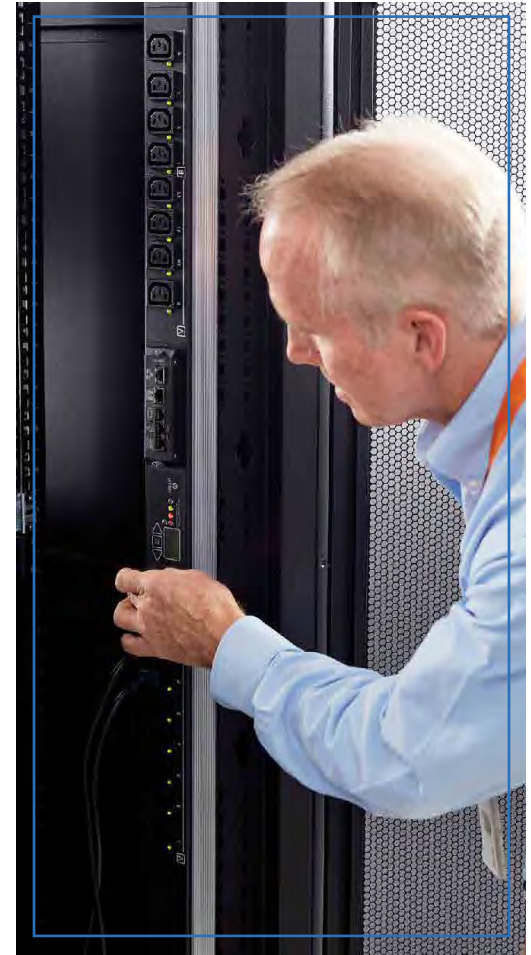
A brand of **legrand**



Vertical PDU

Part # PD Series

- A slim profile option for simpler power requirements
- High density strips support demanding installations
- Single circuit 15 or 20 amps available
- Lightweight, compact design saves space and weight
- Includes mounting hardware





[View Online](#)

LEVITON[®]



Flush Mount QuickPort Plate

Part # 41080

- Accepts all individual QuickPort connectors
- Available in 1,2,3,4 & 6 ports
- Fits within minimum rectangular NEMA openings
- Color-matched wall plate screws
- Individual port configurability allows specification flexibility



[View Online](#)

LEVITON[®]



Quickport Wallplate

Part # 41080-4WP

- Color-matched wallplate screws
- Fits within minimum rectangular NEMA openings
- Compatible with all individual QuickPort connectors
- Individual port configurability allows specification flexibility
- Width allows high port density in a small area



[View Online](#)

LEVITON[®]



Decora Insert, 2-Port

Part # 41642-W

- Mounts flush with Decora wallplate
- True Decora-brand design matches Leviton Decora rocker switches and electrical products
- Fits within minimum NEMA openings
- High port density options
- Inserts accept all QuickPort connectors



[View Online](#)

A Arlington



Low Voltage Brackets

Part # LV, LVN

- Single through 4-gang brackets for the installation of low voltage Class 2 only
- Non-metallic
- Bracket is its own template for cut out
- Mounting wings
- Nail or Screw on low voltage mounting brackets



[View Online](#)



Structured Media Center

Part # 49605

- Plastic doors work with metal Leviton SMCs, improving wireless signals
- Vented doors
- Universal left or right side door orientation
- Tool-free door installations
- Available 14", 28", 42" heights



[View Online](#)



Cable Entry Devices

Part # CE, CED

- Reversible
- Offers both cable protection and appealing design
- Available as a plate or Decora insert
- Great way to cover existing cable
- Color-matched wall plate screws



[View Online](#)



Network Distribution Panels

Part # 476TM

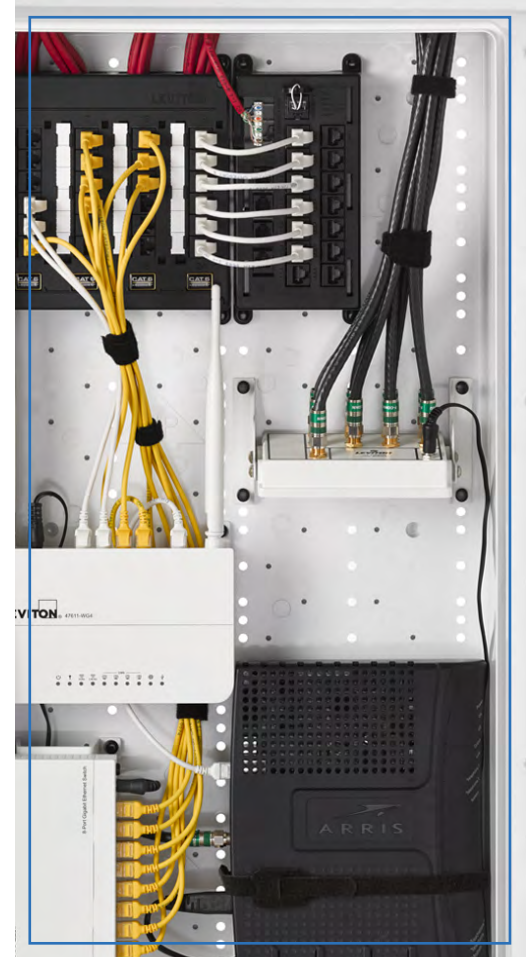
- Commercial-grade telephone and data patching
- Available in Cat5e & Cat6 versions
- Twist & Mount are low profile high density
- Meets ANSI/TIA-570-B bend radius requirements
- Fits into structured media enclosures
- Available in 12-port & 24-port



Desktop Ethernet Switch

Part # DGS-100xG

- Gigabit speeds transfer files 10x faster than Fast Ethernet
- QoS provides clear VoIP calls and smooth online gaming
- D-Link Green technology helps conserve energy
- Cable Diagnostic LED display for easy troubleshooting
- Available in 5-port & 8-port





Frameless Speaker

Part # K-62d, K-82d

- Single Point Stereo
- 2-way round frameless
- Frequency response: 42 Hz - 21kHz ± 3 dB
- 8 ohm nominal
- Overall dimension: 8-7/16" dia. or 9-7/8" dia.



[View Online](#)

Arlington

Audio/Video TV Boxes

Part # TVBU505GC

- Arlington TV back box
- Combines communication & power in a 2-gang box
- All cables are hidden behind TV



kanto

Television Wall Mounts

Part # PMX, PDX...

- Fixed, tilting, or full motion options
- Models for displays 13" – 100"
- Standard VESA mounting in various sizes
- Durable powder coated finish





[View Online](#)



Caséta Smart Lighting Control

Part # P-BDGPRO-PKG1W-C

- Works with the Lutron® App
- Enables control and scheduling of lights
- 600 W for incandescent load and 150 W for CFL/LED Load
- For multi-location installations
- Works with Pico® remote control



[View Online](#)



RadioRA 3 Sunnata Keypads

Part # RRST-Wxxx

- Operate lights, shades / draperies, motorized screens, and many other devices
- Touch or swipe the light bar to set your lights
- LED+ technology provides superior dimming of dimmable LED, incandescent, and halogen bulbs
- Works with existing wiring



[View Online](#)



Vive Wireless Hub

Part # HJS-1-FM

- Connection point for Lutron Vive devices
- Can be easily programmed with any Wi-Fi enabled using the free LutronVive app
- Communicates with controls on a floor using Lutron wireless Clear Connect technology

About Lutron Electronics

Lutron Electronics designs and manufactures lighting controls and lighting control systems for both residential and commercial applications. Lutron's complete line of lighting control solutions for residences, as well as for commercial projects, is supported by corporate headquarters in Coopersburg, Pennsylvania as well as sales and service offices located throughout the US, Canada, and Mexico. Lutron is acknowledged throughout the lighting industry for its expansive product offerings, continued technological achievements, and stringent quality standards.

Why Lutron?

- Lutron Light Controls Save Energy
- Energy Efficiency
- Enhance Comfort & Convenience
- Increase Productivity
- Improve Safety & Security

Lutron Solutions

The company offers a wide variety of light dimmers, whole-home and whole-building dimming systems, controllable window treatments and colour-matched accessories, including wallplates, receptacles, fan controls, and more. Their portfolio ranges from individual dimmers to total light management systems that control entire building complexes.


[View Online](#)


Network Surveillance System



Part # N484E62x

- Six (6) 4 MP eyeball network cameras with one (1) 8-channel 4K NVR
- IP cameras offer the clarity of 4 MP video
- NVR offers built-in motion detection algorithms, alarm triggers, and customized recording modes
- Plug and play technology


[View Online](#)


WiFi Floodlight Camera



Part # IPC-L26N

- 1/2.7-in. 2 MP progressive-scan CMOS sensor
- 2 MP at 30 fps maximum resolution
- Built-in microphone and speaker
- Active alarm with integrated 110 dB siren and floodlight

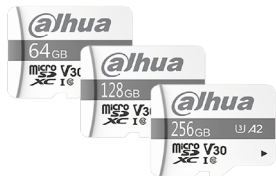

[View Online](#)


5MP WiFi Video Doorbell



Part # DH-DB6I

- 1/2.7-in. 5 MP progressive-scan CMOS sensor
- Dual-band WiFi, IEEE802.11a/b/g/n/ac, 2.4 GHz and 5 GHz options
- H.265 and H.264 dual video compression
- 2560 x 1920 at 15 fps maximum resolution
- 2.2 mm fixed lens


[View Online](#)


Micro SDXC Cards



Part # DHI-TF-P100

- Ideal for high-definition video recording
- Temperature resistant, waterproof, magnetic resistant, X-ray proof
- High-speed transmission rate, up to 100 MB/s
- Up to 60 MB/s write speed


[View Online](#)


IP Video Intercom Kit



Part # DHI-KTP01(S)

- DHI-VTO2202F-P IP outdoor station
- DHI-VTH2421FW-P indoor monitor
- DH-PFS3005-4ET-60 PoE switch
- VTM115 surface-mount box for DHI-VTO2202F-P


[View Online](#)


27" Full HD LED Monitor



Part # DHI-LM27-B200

- High-fidelity digital signal processing for vivid video
- 1920 x 1080p resolution; 16:9 aspect ratio
- 16.7 million colours
- Low energy consumption for a long service life



Starlight Network PTZ

Part # 6AL445XANR

- 1/2.8-in. 4 MP progressive-scan CMOS sensor
- Powerful 45x optical zoom lens
- All in one solution for capturing long-distance video surveillance for outdoor applications
- Smart H.265+ and smart H.264+ dual codecs
- 4 MP at 30 fps maximum resolution



Outdoor Wireless CPE

Part # DH-PFWB5-xxN

- 5 GHz CPE that delivers high-performance and stable operation
- MIMO 2 x 2 technology with an integrated, high-gain, dual polarization directional antenna
- Ultra-high performance wireless communications
- IP66 ingress protection

[View Online](#)


TiOC Network Eyeball Camera

Part # N43BU8x

- 1/2.7-in. 4MP Progressive-scan CMOS Sensor
- Triple-stream Encoding
- 4MP (2688 x 1520) at 30 fps, 3.6mm Fixed Lens
- Analytics+ Functions — Perimeter Protection, Smart Motion Detection+
- Two (2) Built-in Microphones and a Built-in Speaker

[View Online](#)


About Dahua Technology North America

Dahua Technology has been innovating security camera offerings for over 20 years. Founded with a vision for providing improved offerings to the market, Dahua has continued to maintain our focus on the importance of innovation and continual advancement in the security industry. Dahua's goal is to provide our customers with offerings that can help them grow their business in an ever-changing technology landscape.

Their North America business puts this same focus into working alongside our customers to determine the best solutions for their installations, constantly working to implement new and more efficient technology. The Dahua USA and Canada teams are filled with dedicated and experienced industry professionals who thrive on building relationships and working to provide the best possible experience for customers.

Dahua offers a broad range of IP and HDCVI (HD over coax) options to meet the needs of many verticals and projects. With options starting at basic cameras in our Lite Series ranging all the way to advanced analytics and features in our Pro and Ultra Series, there is something available for every budget and installation situation. Dahua offers accessible online technology resources including their Dahua Wiki, that offers software downloads, how-to videos, and product information. Their dedicated technical support team is available to help you troubleshoot any technical questions you may have.


[View Online](#)


All-Weather Industrial Camera



Part # CC02

- High impact camera
- Vibration resistant
- Titanium alloy housing
- Extreme temperature rating
- IP68 waterproof/dustproof


[View Online](#)


HD All-Weather Industrial Camera



Part # CC02-TV1

- 1080P resolution
- Vibration resistant high impact camera
- Titanium alloy housing
- Extreme temperature rating
- IP68 waterproof/dustproof


[View Online](#)


IP All-Weather Industrial Camera



Part # CC04-IP2MV

- PoE or 12VDC/8 IR LEDs
- Rugged vibration damping mount
- 1/2.9" 2.43M PS CMOS sensor
- ONVIF protocol
- 2.85mm lens (6mm optional)
- IP67 waterproof/dustproof

Opticom CC02 Camera - The World's Toughest Camera

The CC02 camera is uniquely designed to meet the rugged environmental demands of heavy industrial applications. The virtually indestructible titanium alloy housing ensures long camera life by shielding the imaging components from dust, moisture, vibration, and extreme temperatures.

For heavy industry, the vibration resistance of the CC02 is unsurpassed. Vibration tests prove the camera's ability to withstand the stresses caused by industrial machinery. Temperature tests prove the camera's ability to perform in both high and low temperatures without the need for a heater or fan. The specially sealed housing, which is IP68 rated according to NEMA, prevents dust and water penetration.

The included tri-axial mounting system provides ease of installation in virtually any location.

Applications

Sawmills • Mining • Railway • Utilities • Transportation • Manufacturing • Biomass • Pulp & Paper
 • Aggregate • Agriculture • Marine • Military • Steel Mills • Energy



Explosion Rated Camera

Part # CC03-IP

- IP networking high definition explosion rate camera with fixed lens
- 2 megapixel CMOS sensor
- 3.6mm fixed megapixel lens
- CSA / FM / ATEX / IEC approvals
- IP66 waterproof / dustproof



IP IR Bullet Camera

Part # MIB-xxxxSV

- 3.3-12mm varifocal lens
- 48 LEDs/180ft distance/ICR
- 2D/3D DNR
- ONVIF protocol
- Available in 4MP or 8MP



IP PTZ Camera

Part # MIP-4002 / MIP-4003

- Full 2.1 MP/1080P resolution
- Dual streaming (H.264/MPEG4 supported)
- 30x optical/16x digital zoom
- 6 Hi power LEDs (300ft)
- ONVIF protocol
- IP66 rated



IP Dome Cameras

Part # MIV-xxxxSV

- 3.6 to 10mm lens options
- Up to 30 LEDs/100ft distance
- Two way audio available
- 2D/3D DNR
- ONVIF protocol
- IP66 rated



[View Online](#)



IP Ethernet Monitors

Part # LCDI-xxIP

- Doesn't require direct computer (video card) hook-up
- Able to recognize up to 8-cameras on same network
- Only requires Ethernet
- 1080 x 1920
- VESA pattern for wall mounting
- Available in 15.6", 21.5", 24", 32", 42", and 46"



CCTV FSM LCD Monitors

Part # FSM Series

- HDMI, VGA, BNC, supports TVI, AHD, CVI
- 3D comb filter/3D de-interlace
- LED illuminated panel
- Desk stand included (VESA mountable)
- Available in 17", 19", 21.5", 27", and 32"



[View Online](#)



CCTV LCDI Monitors

Part # LCDI

- Full high definition
- HDMI, DVI analog inputs
- 3D De-interlace technology
- 3D comb filter/LED back-light
- Available in 10", 15", 17", 19", 21.5" and 32"

E.B. Horsman Process, Automation & Controls (PAC) Specialists

Inquire



E.B. Horsman's dedicated PAC division combines our full line of process, automation, industrial controls, and motion systems with experts to support your industrial needs. This unique team of technical experts helps engineers and technicians optimize design and specification while seamlessly managing parts inventory, logistics, payables and more.

Industrial Communication and Networking

E.B. Horsman provides and supports a full range of Siemens industrial communication and networking products including unmanaged/managed switches, wireless, security, connectivity and remote access solutions. With complimentary solutions from other manufacturers, we can help to optimize utilization of the data generated in your facility and make sure that the Operational Technology (OT) and Information Technology (IT) networks seamlessly interact.

Talk to a specialist today about your Industrial Communications & Networking needs: GETPAC@ebhorsman.com



| NETWORK | RATE (Mb/s) | CABLE | DISTANCE (m) |
|-------------|-------------|-----------------------|--------------|
| 10Base-T | 10 | UTP Cat3 | 100 link |
| 10Base-FL | 10 | MM Fibre | 2000 |
| 10Broad-36 | 10 | RG-59 or RG-5 coax | 3600 |
| 100Base-TX | 100 | UTP Cat5 | 100 |
| 100Base-VG | 100 | UTP Cat3 | 100 |
| 100Base-FX | 100 | MM Fibre | 2000 |
| 100Base-FX | 100 | SM Fibre | 20000 |
| 100Base-SX | 100 | MM Fibre | 500 |
| 1000Base-SX | 1000 | MM Fibre | 250+ |
| 1000Base-LX | 1000 | MM Fibre | 500+ |
| 1000Base-LX | 1000 | SM Fibre | 20000 |
| 1000Base-T | 1000 | UTP Cat5e | 100 |
| 1000Base-TX | 1000 | UTP Cat6 | 100 |
| 10GBase-S | 10G | MM | 26 to 300 |
| 10GBase-L4 | 10G | MM and SM | 300 to 10000 |
| 10GBase-L | 10G | SM | 10000 |
| 10GBase-E | 10G | SM | 40000 |
| 10GBase-CX4 | 10G | Parallel Coax | 15 |
| 10GBase-T | 10G | UTP Cat6A | 100 |
| 10GBase-SR | 10G | OM2, OM3 or OM4 Fibre | 82 to 400 |
| 10GBase-LRM | 10G | OM2, OM3 | 220 |
| 10GBase-LX4 | 10G | OM2, OM3 | 300 |



E.B.HORSMANDATACOM

Data Communications & Network Division

BC LOWER MAINLAND

Burnaby

3935 2nd Avenue
Burnaby, BC V5C 3W9
Tel: 604.292.4800

Langley

#101 - 20550 Duncan Way
Langley, BC V3A 7A3
Tel: 604.533.1275

Richmond

12360 Vickers Way
Richmond, BC V6V 1H9
Tel: 604.273.1981

Surrey

13055 80th Avenue
Surrey, BC V3W 3B1
Tel: 604.596.7111

NORTHERN BC

Dawson Creek

1121 97th Avenue
Dawson Creek, BC V1G 1N5
Tel: 250.782.4896

Prince George

2255 S. Quinn Street
Prince George, BC V2N 2X4
Tel: 250.563.0575

Terrace

101 - 2915 Molitor Street
Terrace, BC V8G 3A5
Tel: 250.635.6379

Williams Lake

527E S. MacKenzie Avenue
Williams Lake, BC V2G 1C8
Tel: 250.392.7795

BC INTERIOR

Cranbrook

Unit A 800 Industrial Road # 2
Cranbrook, BC V1C 4C9
Tel: 250.489.4591

Kamloops

B - 983 Camosun Crescent
Kamloops, BC V2C 6G1
Tel: 250.374.3191

Penticton

401 Okanagan Avenue
Penticton, BC V2A 3K1
Tel: 250.492.4032

Vernon

5203 24th Street
Vernon, BC V1T 8X7
Tel: 250.545.2191

VANCOUVER ISLAND

Campbell River

1030 B - 9th Avenue
Campbell River, BC V9W 4C2
Tel: 250.287.9265

Courtenay

2615 Moray Place
Courtenay, BC V9N 8A9
Tel: 250.334.0338

Duncan

5286 Polkey Road
Duncan, BC V9L 6W3
Tel: 250.748.3377

Parksville

1023 Herring Gull Way
Parksville, BC V9P 1R2
Tel: 250.954.1797

Victoria

3250 Tennyson Ave
Victoria, BC V8Z 3P3
Tel: 250.475.1999

ALBERTA

Calgary

#104 - 11080 50 Street SE
Calgary, AB T2C 5T4
Tel: 587.620.0020

Edmonton

7223 68th Avenue NW
Edmonton, AB T6B 3T6
Tel: 780.490.7740

SASKATCHEWAN

Saskatoon

134 - 815 66th Street
Saskatoon, SK S7P 0E6
Tel: 306.244.2200

CORPORATE OFFICES

Head Office & Distribution

19295 25th Avenue
Surrey, BC V3Z 3X1
Tel: 778.545.9916

Corporate Divisional Office

215 9440 202nd Street
Langley, BC V1M 4A6
Tel: 778.705.0015

Have questions?

Contact our Technical Experts at datacom@ebhorsman.com