



E.B.HORSMANDATACOM

Data Communications & Network Division

Your Guide to DATA COMMUNICATIONS

British Columbia: Burnaby | Campbell River | Courtenay | Cranbrook | Dawson Creek | Duncan | Kamloops | Langley
Parksville | Penticton | Prince George | Richmond | Surrey | Terrace | Vernon | Victoria | Williams Lake

Alberta: Calgary | Edmonton **Saskatchewan:** Saskatoon **Head Office:** Surrey

Corporate Divisional Offices: Port Kells | Calgary | Edmonton **Distribution Centres:** Surrey | Edmonton

Datacom Solutions

There’s more data solutions and technology available than ever before - can your equipment handle it all? E.B. Horsman & Son has the inventory and technical expertise you need to build a network infrastructure for the future with 24/7 uptime for both rudimentary to large enterprise applications.

We provide the following solutions:

Residential Communications

Datacom infrastructure is essential for the success of connected homes. Smart devices and components must work together seamlessly and be compatible with both current and future technologies.

Commercial Communications

Designing commercial infrastructure is vital for today’s and tomorrow’s data needs. With new technologies leveraging high-speed networks, maintaining infrastructure integrity is crucial for business success.

Industrial Communications

Industrial communication networks are built for real-time control and data integrity in large, harsh environments. This technology enables greater energy efficiency, flexible production, and digital manufacturing.

Datacom Technical Capabilities

Product Advice

Technologies have continued to change and our specialists can offer you advice on the best solutions for your needs.

Quotations

Our team is available to build a quote for your client or bid package so you can feel confident you’re offering a modern communications network with high capacity and minimal disruption.

Design

We have a team of experienced professionals that will help you design the best solution for your residential, commercial and industrial projects.

Training

With the evolution of technology, we want you to be a leader in your specialty. Our in-house facilities and manufacturer partners work together to offer you application and product specific training.

Installing & Programming

Our network of integration partners will provide you with all the help you need to install and program all the technologies for optimal efficiency.

After Sales Support

Our team guarantees continuous support throughout your project and products lifetime. Call us regarding any questions that arise and our team will be happy to assist with any post installation issues.

Unlock Your Potential with Expert Data Communications Training!

Whether you’re just starting out or looking to deepen your expertise, our comprehensive training programs are designed to keep you ahead in this rapidly evolving field. Gain practical skills, hands-on experience, and certifications that will set you apart. Don’t miss this opportunity to advance your career—enroll in our training sessions today and become a leader in the world of data communications!

Contact us at datacom@ebhorsman.com for more information!

Top Manufacturers



Table of Contents

Ethernet Cable	3
Ethernet Connectors	4
Copper Patch Cords & Panels	5
Fiber, Connectors & Patch Panels	6
Copper Installation & Test Tools	7
Fiber Installation & Test Tools	8
Cable Management	9
Data Centers	10
Racks	11
Enclosures & Cooling	12
Rack Cable Management	13
Power Distribution	14
UPS - Single Phase	15
UPS - Three Phase	16
Plates, Brackets & Enclosures	17
Residential & Commercial Automation	18
Residential & Commercial Cameras & Monitors	19
Industrial Cameras & Monitors	21
E.B. Horsman Technical Divisions	23
Cable Table	26


LEVITON

Cat6, Cat6A

Part # UTP6x, IUTAx-MxS

- Supports 10BASE-T, 100BASE-T, 1000BASE-T and 10GBASE-T Ethernet
- Supports power over Ethernet (PoE+) applications
- Available in plenum, riser, CM, IEC 60332-1 (Low-Smoke Zero Halogen) and PVC cable jackets
- Tested & verified to exceed ANSI/TIA, IEEE, & ISO/IEC


PANDUIT

Cat6, Cat6A

Part # PUP6C04xx-W, PUP6XHD04xx-G

- Supports 10BASE-T, 100BASE-T, 1000BASE-T and 10GBASE-T Ethernet
- Supports power over Ethernet (PoE+) applications
- Available in Plenum, Riser, CM, IEC 60332-1 (Low-Smoke Zero Halogen) and PVC cable jackets
- Tested & verified to exceed ANSI/TIA, IEEE, & ISO/IEC


General Cable
A Brand of Prysmian Group

Cat 5e, Cat6, Cat6A

Part # 5133xxxE, 5131xxxE, 71338xx...

- Supports 10BASE-T, 100BASE-T, 1000BASE-T and 10GBASE-T Ethernet
- Supports power over Ethernet (PoE+) applications
- Available in plenum, riser, CM, IEC 60332-1 (Low-Smoke Zero Halogen) and PVC cable jackets
- Tested & verified to exceed ANSI/TIA, IEEE, & ISO/IEC


LEVITON

Gigamax UTP

Part # 5G108-Rx5, 5G108-Bx5

- Light commercial Cat5e applications
- Dual wiring code label allows connector to be wired to either T568A or T568B
- Individual port configurability (spec flexibility)
- Robust one-piece, lead-frame design
- Narrow connector (high port density in a small area)


LEVITON

eXtreme UTP

Part # 61110-Rx6, 61110-Bx6, 6110G-Rx6

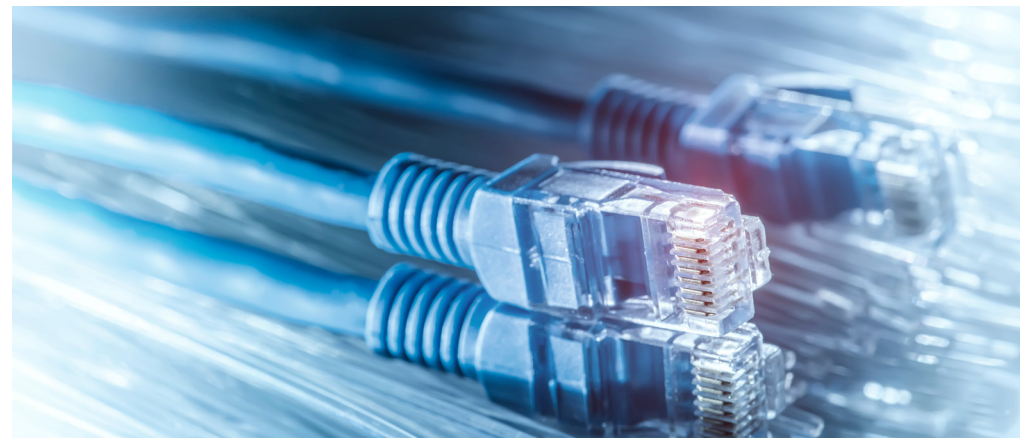
- Commercial Cat5e, Cat6, and Cat6A applications
- Patented retention force technology (RFT)
- Alien crosstalk suppressed by cone of silence, and new printed circuit board
- Pair separation tower (PST) design
- Patented, dual-layer wiring label


LEVITON

Atlas-X1 UTP & Shielded

Part # 61xJK, 6AxJK

- Demanding Cat5e, Cat6, Cat6A, and Cat8 applications
- Patented retention force technology (RFT)
- Third-party verified to exceed all margins
- Tool-free termination and re-termination
- Short connector design for superior bend radius


CDD

Cat 5e, Cat6

Part # WICH210xBL

- Bagged in plastic plus plastic handles & binding straps
- Foot marking every two feet
- Jacket colour and part number clearly marked
- Easy pull pack or reel
- CSA & CUL Approved
- FT4 Fire Rated


PANDUIT

Mini-Com UTP/Shielded

Part # CJ(S)688TG, CJ(S)6X88TG

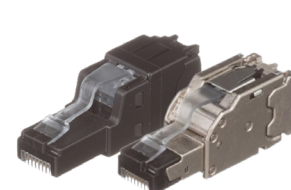
- Commercial Cat5e, Cat6, and Cat6A applications
- Patented Giga-TX technology for jack terminations
- Gold plated contacts
- MaTriX technology provides superior suppression of alien crosstalk


PANDUIT

NetKey UTP

Part # NK688M, NK6X88M

- Meets standards for Cat5e, Cat6, and Cat6A
- Snaps in and out of Keystone openings for easy moves, adds, and changes
- Performance tested and individually serialized for future traceability

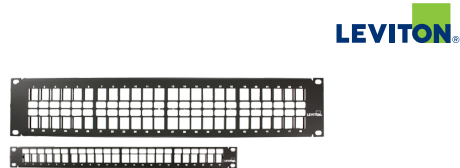

PANDUIT

Modular Plug

Part # FP6X88MTG-X, FPS6X88MTG

- TX6A
- Category 6A UTP Field Terminable RJ45 Plug
- Simple-to-attach plug for field termination of 4-pair unshielded twisted pair cable
- Includes EGPT termination tool





Rackmount Patch Panels



Part # 49255

- Quickport style: Mix voice, data, video, audio in a single panel
- Standard 24-port & 48-port readily available
- Silk-screened port numbers on panel front
- Flat panels' traditional profile
- 12-port vertical wall mount version available

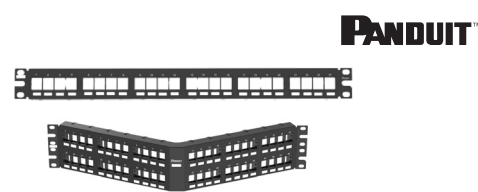


Front Load Panels



Part # 49455

- UTP Quickport compatible with all Quickport connectors
- 2 Rack Unit 48-port panel
- Silk-screened port numbers on panel front
- Supports jack installation from the front or rear
- Mounts on 19-inch equipment racks



Flush Patch Panels



Part # NKPPxxFMY, NKPPAxxFMY

- NetKey style Keystone patch panels
- Modular patch panels accepts up to 24 or 48 keystone modules
- Mounts to 19" and 23" racks and cabinets

Streamline Your Fiber Optic Consultation

Our quick and easy questionnaire gathers essential details about your fiber optic needs, allowing our expert team to provide personalized recommendations and solutions.

Scan the QR code today and get started on your path to faster and more reliable connectivity!



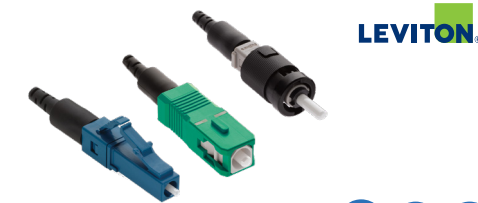
General Cable
A Brand of Prysmian Group

Fiber Optic Cable



Part # BE0xx1ANU.BK

- For indoor and outdoor use
- Type OFNP SM and MM



FastCAM Fiber Optic



Part # 49991-xLC, 49991-xSC, 49991-xST

- Visual fault locator for LC, SC, & ST connectors
- Pre-polished, field-installable connectors
- Require no polishing or epoxy curing
- Mechanical termination with molded v-groove tech
- Available in multi-mode, laser optimized multi-mode, and single-mode connector styles



Rackmount Patch Panels



Part # NKFP24Y, NKFP48Y

- NetKey style Keystone patch panels
- Modular patch panels accept all Keystone modules
- Mounts to standard ANSI/TIA 19" racks



Patch Cords



Part # 6AS10, 6D460, 5D460

- Available in Cat5e, Cat6, Cat6A
- Slim-line boot for narrow profile
- Strain-relief boot ensures long-term network performance
- Snagless Tab prevents tab breakage



Patch Cords



Part # WICD0x

- Light weight with new design boot
- High performance Cat6
- Slim size: 5mm diameter
- Exceptional speed and reliability
- Compatible with 10/100/1000 Ethernet Networks



OptiCam Fiber Optic



Part # FLC, FSC, FST

- Quick installation
- Patented re-termination capability provides yield rates approaching 100%
- Factory pre-polished fiber endface
- Cam activated fiber and buffer clamp mechanism



OPT-X SDX Fiber Patch Panel



Part # 5R1UM-F0x

- Available in 1RU, 2RU, 3RU and 4RU
- Stackable and adjustable fiber rings
- Front saddles pivot
- Accepts SDX adapter plates, splice modules and/or cassettes





Bluetooth Label Printer



Part # M211

- Design, preview & print labels right from mobile app
- Maximize on-site efficiency — import data, save and share files with ease
- Print over 300 labels on a single charge using advanced Li-Ion battery technology
- Compact and lightweight (1.2lbs) design



Cable Tester Kit



Part # VDV 501-853

- Cable tester tests voice (RJ11/12), data (RJ45) and video (F-connector) coax connections
- Measure cable length up to 2000 feet
- Test for open, short, miswire, shield or split-pair faults
- Multi-style tone generator



Crimping Tool



Part # 30-696

- Pro Level crimping tool for RJ-45 (8P8C) and RJ-11 (6P6C, 6P4C, 6P2C) modular plugs
- Ratchet allows for consistent, high quality connections
- Blade for cutting cable and stripping cable jackets
- Compatible with CAT5e/6 data plugs
- Works with most shielded modular plugs CAT5e/6



Technician's Service Kit



Part # 33-505

- Punchdown Tool with spring loaded mechanism
- Includes two full blade sets - 110 (Data) and 66 (Telco)
- Ringer Stripper
- Electrician's Scissors
- Multi-bit screwdriver for panel and wall plate access



FastCAM Termination Kit



Part # 49800-MSK

- Compact, ergonomic design
- High precision cleaves
- 3-action operation
- Includes the cleaver, lint free dry wipes, alcohol pads, and a fiber stripper
- Single-mode or multi-mode use



Wire Mapper



Part # 33-855

- Test RJ45/8 conductor cables
- Backlit LCD identifies errors by pin
- For twisted pair CAT5e/6/6A cables
- Shielded RJ45 port interfaces on tester and remote
- Built-in tone generator with 3 selectable tones



PoE Tester



Part # R158006

- Measures cable length and provides distance to fault information using Time Domain Reflectometry
- Integrated RJ11/RJ12 (voice), RJ45 (data) and F-type (video) connectors
- Built in network detection
- Tone generator with multiple tones



OptiCam Termination Kit



Part # FOCTT2-PKIT3

- Step by step visual guidance
- Kit ensures certainty of terminations and reduces the number of rejected connectors and terminations
- Includes rotary-blade style precision cleaver



Fusion Splicer



Part # 910FS

- For indoor and outdoor splicing applications
- Core Alignment
- Dual cameras, 240X magnification, and 5.7" colour LCD
- Capacity to store up to 5,000 splice records



Fiber Certifier Signaltek



Part # R156005

- Network traffic performance test on copper and fiber to IEEE802.3ab standard
- Wiremap test for open, shorts, miswires and split pairs to TIA-568 standard
- Gigabit link verification for copper and fiber cabling


ABB

Steel Wire Basket Tray



Part # ETQx0yySE10

- Installs in less time than conventional tray with no complex layouts, a minimum of tools and less wasted material
- Wide range of tray widths
- Continuous airflow prevents overheating and the build-up of dust and contaminants


WIREMOLD
 legrand

Latching Raceway



Part # Eclipse PN03, PN05, PN10 Series

- 1" (25mm) bend radius compliant fittings
- Adhesive backing for low-voltage (under 50V) applications
- Snap-on latching cover


PANDUIT™

J-Hook



Part # JPxxx

- Complete horizontal and vertical 1" bend radius control
- For use in air handling spaces
- Available in four sizes and select colours
- 4" max. bundle capacity


GRIPPLE

UniGrip - Y-Fit Basket Tray Hanger



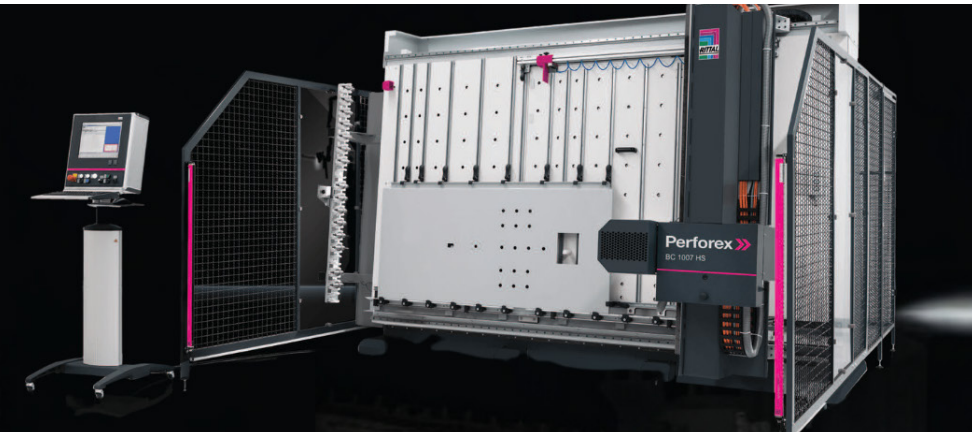
Part # UG2-YCHGxxMM-HG-xx

- Release button allows for simple adjustment
- Button acts as a locking screw
- Side cable exit keeps cable away from working area
- Designed for fast suspension of electrical conduit and tray, or lighting
- Load rating: up to 240 lbs / 110 kg with 5:1 SWL

CUSTOM ENCLOSURES AT EB HORSMAN

Streamline your enclosure modifications with E.B. Horsman & Son's Perforex machine, our CNC machining center. We take care of all measuring, cutting, and drilling in-house.

CONTACT US TODAY FOR YOUR PANEL MODIFICATION NEEDS AT
INFO@EBHORSMAN.COM





Electron
METAL



2-Post Open Frame Rack

Part # RK1FR2-194400-BK

- Fully welded all steel construction, ships assembled and ready to use
- Heavy duty 3 x 5" steel angle base plates
- Holes tapped 10-32 at standard EIA spacing
- Available with 12-24 tapped rails on special order



Electron
METAL



Seismic Relay Rack

Part # RKZFR2-194400-BK

- Built with welded 11 ga. steel
- Heavy-duty 6" x 3" side channels
- Mounting holes tapped 10-32 at standard EIA spacing
- Meets Zone 4 compliancy



Electron
METAL



4-Post Rack

Part # RKDKIC-194426-42-BK

- Adjustable depths from 26" to 42"
- 12awg Steel Welded Mounting Rails
- Universal Cage Nut Rails



RITTAL



Network Enclosure TS IT

Part # 5509xxx

- High load capacity
- Tool-free installation
- Intelligent cable management
- Fast side panel assembly
- Pre-configured complete packages available



VERTIV



SmartCabinet

Part # VS3xxx, ZCxxx

- Cooling unit provides 0-100% capacity modulation
- 9" HMI display with standard Modbus communication capabilities
- Pre-integrated with a Power Management Block
- Environmental protection for harsh conditions
- Outdoor heat rejection



Electron
METAL



Network Cabinet

Part # CB4KNW-274442-BK

- Features a solid top cover with multiple cable entry, fan cutouts, and hot air chimney
- Supports up to 3000 lbs
- Set of leveling feet and 2 quick-release side panels
- Universal accessory channel
- 100 cage nuts for installation



Middle Atlantic Products
A brand of **Legrand**



Swing Out Wall Rack

Part # SFR-12-18, SFR-20-24

- Available in 12RU and 20RU Economical Swing Frame Wall Rack
- 10-32 Rack Rail Type
- TAA Certification



Electron
METAL



Reverse Wall Mount Rack

Part # JWMCRE1-19xx

- Swing-Out Design for full access to rear cables
- Lockable front door
- Made with high-grade steel
- Integrated cable management features



RITTAL



Wall-mounted Blue e+ AC

Part # 318xxxx, 330xxxx, 332xxxx ...

- Constant temperature inside enclosure
- Active speed-governed circuit components
- Component-friendly cooling for long service life
- Remote monitoring via Ethernet
- For environments ranging from -20°C to +60°C
- UL Type 12 and 3R



RITTAL



Roof-mounted Cooling Unit

Part # SK 3301.800

- Even air distribution in front of the 482.6 mm (19") level
- Cooling of IT equipment
- Supports front-to-back air routing typical of IT applications
- Control of the server air infeed temperature





Horizontal Cable Retainer



Part # HCMRET-190xxx

- Organizes cables across the horizontal plane
- Removable covers for quick access to cables
- Optimal bend radius



Vertical Cable Management



Part # CMRSTD-xxxxxx

- Utilizes vertical space on relay racks
- Adaptable sizing for universal application
- Designed to withstand wear in high-traffic environments
- Prevents cable from slipping or disconnecting



Horizontal Cable Management



Part # HCM-xx

- D-ring style on front and rear
- No end rings
- Welded steel construction
- Durable black powder coat finish



Vertical Cable Management



Part # RLA-CC

- Solid front door with 3-point magnetic latch
- 45 RU cable duct
- Welded steel construction
- RoHS compliant



Basic Horizontal PDU



Part # VP9562, VP9563, VP9571A

- Reliable, space saving, and cost-effective rack power distribution
- Remote connectivity
- Small footprint and low profile breakers
- Standard three-year warranty, upgraded to five years with product registration



Basic Vertical PDU



Part # VP7541, VP9567

- Reliable, space saving, and cost-effective rack power distribution
- Remote connectivity
- Small footprint and low profile breakers
- Standard three-year warranty, upgraded to five years with product registration



Horizontal PDU



Part # PD-815R-PL

- Rear distribution outlets with front status pilot light
- Includes surge and spike protection, as well as EMI filtering
- Occupies one rackspace
- 9 foot cord



Vertical PDU



Part # PWBNVx

- Delivers 20-amp power supply
- 0u design
- Designed for easy integration with standard rack configurations
- Crafted to meet CSA requirements



GXT5 Lithium-Ion UPS

Part # GXT5LI

- Lithium-Ion UPS batteries last up to 3x longer than traditional VRLA batteries
- 5-year warranty on UPS and batteries
- Low total cost of ownership (TCO) with fewer or no battery replacements over its lifetime



VERTIV GXT5 UPS WITH LITHIUM-ION TECHNOLOGY

The GXT5 Lithium-Ion double conversion online uninterruptible power supply (UPS) provides both the highest level of power conditioning and battery backup for business-critical IT equipment in the event of an unanticipated loss of power or an unprecedented power surge.

The GXT5 Lithium-Ion UPS protects against the widest range of power fluctuations and automatically switches to battery backup when power loss is detected. With a 0.9 or better output power factor (PF) and no transfer time to operate on battery, you can ensure your most critical assets are protected.

Applications

The GXT5LI is ideally suited for environments such as financial institutes, data centers, education facilities, government agencies, healthcare institutes and in retail with:

- Mission Critical Applications and Systems • Network Workstations • Servers • IDF/Network Closets
- Large Network Peripherals • PoE & VoIP, Gigabit Switches • Computer Rooms • Network Storage Devices



Desktop UPS

Part # PSA5

- Protects televisions, desktop computers, gaming consoles, workstations, networks/routers, surveillance & other important electronics
- Provides backup power and protection during damaging surges, spikes or power outages
- 3 year full unit and battery warranty



PSI5 Lithium-Ion UPS

Part #PSI5

- 2x battery life
- 5 year standard warranty on UPS and batteries
- Quicker recharge time
- Up to 10x more discharge cycles
- Long runtime



Battery Back Up

Part # GXT5- 48VBATT

- 48V, 9Ah external expansion battery and cabinet
- 500VA to 2kVA rack or tower UPS system
- Can be added as needed for extended run time



ITA2 UPS

Part # ITA2

- Online three-phase (3:3)
- Full-colour LCD interface with gravity sensing orientation
- Remote emergency power off
- Prevents noise, harmonics and distortion from being transferred to connected loads



EXS UPS

Part # EXS

- Double conversion operation up to 96%
- Flexible integrated runtime solution
- Integrated Maintenance Bypass
- High energy density, compact footprint



Modular EXM UPS

Part # EXM

- Up to 99% efficient
- Delivers high efficiency levels throughout the capacity range
- Transformer-free design
- Unity Power Factor





LEVITON®

Quickport Wallplate**Part # 41080x**

- Accepts all individual QuickPort connectors
- Available in 1,2,3,4 & 6 ports
- Fits within minimum rectangular NEMA openings
- Color-matched wall plate screws
- Individual port configurability allows specification flexibility



LEVITON®

Structured Media Center**Part # 49605**

- Plastic doors work with metal Leviton SMCs, improving wireless signals
- Vented doors
- Universal left or right side door orientation
- Tool-free door installations
- Available 14", 28", 42" heights



LUTRON®

Caséta Smart Lighting Control**Part # P-BDGPPO-PKG1W-C**

- Works with the Lutron® App
- Enables control and scheduling of lights
- 600 W for incandescent load and 150 W for CFL/LED Load
- For multi-location installations
- Works with Pico® remote control



LUTRON®

RadioRA 3 Sunnata Keypads**Part # RRST-HN4B-WH**

- Operate lights, shades / draperies, motorized screens, and many other devices
- Touch or swipe the light bar to set your lights
- LED+ technology provides superior dimming of dimmable LED, incandescent, and halogen bulbs
- Works with existing wiring



LUTRON®

Vive Wireless Hub**Part # HJS-1-FM**

- Connection point for Lutron Vive devices
- Can be easily programmed with any Wi-Fi enabled using the free LutronVive app
- Communicates with controls on a floor using Lutron wireless Clear Connect technology



LEVITON®

Decora Insert Strips**Part # 4164x**

- Mounts flush with Decora wallplate
- True Decora-brand design matches Leviton Decora rocker switches and electrical products
- Fits within minimum NEMA openings
- High port density options
- Inserts accept all QuickPort connectors



LEVITON®

Quickport Boxes**Part #41089-2xP**

- Suitable for installation in air-handling spaces (plenum)
- Compatible with all individual QuickPort modules
- 1-port blank included to close off unused port
- Designation label provided and includes 2 self-tapping screws and pressure-sensitive adhesive



Arlington

Low Voltage Brackets**Part # LV, LVN**

- Single through 4-gang brackets for the installation of low voltage Class 2 only
- Non-metallic
- Bracket is its own template for cut out
- Mounting wings
- Nail or Screw on low voltage mounting brackets

LUTRON® About Lutron Electronics

Lutron Electronics designs and manufactures lighting controls and lighting control systems for both residential and commercial applications. Lutron's complete line of lighting control solutions for residences, as well as for commercial projects, is supported by corporate headquarters in Coopersburg, Pennsylvania as well as sales and service offices located throughout the US, Canada, and Mexico. Lutron is acknowledged throughout the lighting industry for its expansive product offerings, continued technological achievements, and stringent quality standards.

Why Lutron?

- Lutron Light Controls Save Energy
- Energy Efficiency
- Enhance Comfort & Convenience
- Increase Productivity
- Improve Safety & Security

Lutron Solutions

The company offers a wide variety of light dimmers, whole-home and whole-building dimming systems, controllable window treatments and colour-matched accessories, including wallplates, receptacles, fan controls, and more. Their portfolio ranges from individual dimmers to total light management systems that control entire building complexes.



Network Surveillance System



Part # N484E62x

- Six (6) 4 MP eyeball network cameras with one (1) 8-channel 4K NVR (other configurations available)
- IP cameras offer the clarity of 4 MP video
- NVR offers built-in motion detection algorithms, alarm triggers, and customized recording modes
- Plug and play technology



WiFi Floodlight Camera



Part # IPC-L46N

- 1/3-in. 4 MP progressive-scan CMOS sensor
- 4 MP at 30 fps maximum resolution
- Built-in microphone and speaker
- Active alarm with integrated 110 dB siren and floodlight



5MP WiFi Video Doorbell



Part # DH-DB6I

- 1/2.7-in. 5 MP progressive-scan CMOS sensor
- Dual-band WiFi, IEEE802.11a/b/g/n/ac, 2.4 GHz and 5 GHz options
- H.265 and H.264 dual video compression
- 2560 x 1920 at 15 fps maximum resolution
- 2.2 mm fixed lens



Starlight Network PTZ



Part # 6AL445XANR

- 1/2.8-in. 4 MP progressive-scan CMOS sensor
- Powerful 45x optical zoom lens
- All in one solution for capturing long-distance video surveillance for outdoor applications
- Smart H.265+ and smart H.264+ dual codecs
- 4 MP at 30 fps maximum resolution



Outdoor Wireless CPE



Part # DH-PFWB5-xxN

- 5 GHz CPE that delivers high-performance and stable operation
- MIMO 2 x 2 technology with an integrated, high-gain, dual polarization directional antenna
- Ultra-high performance wireless communications
- IP66 ingress protection
- Recommended for up to 5 km PTP/PTMP wireless connection



TiOC Network Eyeball Camera



Part # N43BU8x

- 1/2.7-in. 4MP Progressive-scan CMOS Sensor
- Triple-stream Encoding
- 4MP (2688 x 1520) at 30 fps, 3.6mm Fixed Lens
- Analytics+ Functions — Perimeter Protection, Smart Motion Detection+
- Two (2) Built-in Microphones and a Built-in Speaker



ePOE Bullet Camera



Part # DH-IPC-HFW7442H-Z-X

- 4-MP 1/1.8" CMOS image sensor, low luminance and high definition image
- Built-in IR LED with maximum illumination distance of 60 m.
- Time-Division Exposure technology and Privacy Protection



IP Video Intercom Kit



Part # DHI-KTP01(S)

- DHI-VTO2202F-P IP outdoor station
- DHI-VTH2421FW-P indoor monitor
- DH-PFS3005-4ET-60 PoE switch
- VTM115 surface-mount box for DHI-VTO2202F-P



27" Full HD LED Monitor



Part # DHI-LM27-B200

- High-fidelity digital signal processing for vivid video
- 1920 x 1080p resolution; 16:9 aspect ratio
- 16.7 million colours
- Low energy consumption for a long service life
- Other sizes available



IP CCTV Camera Tester



Part # R171000

- Connect to various cameras using RJ45, Wi-Fi or BNC ports
- Provide proof of installation with PDF reports
- Faster camera login with QuickIP function
- Power the camera with 12V from the Li-Ion battery or PoE/PoE+



About Luminys Systems Corporation and Dahua Technology North America

For over 20 years, Dahua Technology has been at the forefront of security camera innovation. With a clear vision to provide improved solutions to the market, Dahua remains focused on pushing the boundaries of technology in the security industry. Their mission is to empower customers with advanced offerings that help them grow and stay competitive in a fast-evolving tech landscape.

Luminys Systems Corporation builds on this legacy, delivering advanced security and IoT solutions designed to meet the evolving needs of the industry. Luminys is set to launch innovative products that adhere to US laws, including FCC and NDAA requirements, while maintaining the highest standards in cybersecurity and data protection. Together, Dahua and Luminys are redefining industry standards, providing comprehensive solutions that connect data, drive automation, and bring added value to the North American market.



All-Weather Industrial Camera



Part # CC02

- High impact camera
- Vibration resistant
- Titanium alloy housing
- Extreme temperature rating
- IP68 waterproof/dustproof



HD All-Weather Industrial Camera



Part # CC02-TVI

- 1080P resolution
- Vibration resistant high impact camera
- Titanium alloy housing
- Extreme temperature rating
- IP68 waterproof/dustproof



IP All-Weather Industrial Camera



Part # CC04-IP3MV, CC04-IP5MV

- PoE or 12VDC/8 IR LEDs
- Rugged vibration damping mount
- 1/2.9" 2.43M PS CMOS sensor
- ONVIF protocol
- 2.85mm lens (6mm optional)
- IP67 waterproof/dustproof



IP IR Bullet Camera



Part # MIB-xxxxSV

- 3.3-12mm varifocal lens
- 48 LEDs/180ft distance/ICR
- 2D/3D DNR
- ONVIF protocol
- Available in 5MP or 8MP



IP Networking PTZ Camera



Part # MIP-4002, MIP-4003

- 4.3mm to 129mm (30x) optical zoom
- 6 IR LEDs
- H.264 dual stream
- 6 high power LEDs
- Up to 255 presets, 8 auto scan, 8 tour and 4 pattern
- IP66 rated



IP Dome Cameras



Part # MIV-xxxxSV

- 3.6 to 10mm lens options
- Up to 30 LEDs/100ft distance
- 2D/3D DNR
- ONVIF protocol
- Available in 5MP or 8MP

Opticom's Industrial Cameras - The World's Toughest Cameras

The CC02/CC04 cameras are uniquely designed to meet the rugged environmental demands of heavy industrial applications. Now with 10 streams per camera and a high-resolution option, these virtually indestructible housings ensure long camera life by shielding the imaging components from dust, moisture, vibration, and extreme temperatures. Additionally, the M12 connector option enhances versatility for various installation requirements.

For heavy industry, the vibration resistance of the CC02 and CC04 is unsurpassed. Vibration tests prove the camera's ability to withstand the stresses caused by industrial machinery. The specially sealed housings which prevent dust and water penetration.

The included mounts provide easy installation in virtually any location.

Applications

Sawmills • Mining • Railway • Utilities • Transportation • Manufacturing • Biomass • Pulp & Paper • Aggregate • Agriculture • Marine • Military • Steel Mills • Energy • Food Processing • Pharmaceuticals



Explosion Proof IP Camera



Part # CC03-IP3M36FIR, CC03-IP3MVFIR-M

- IP networking high definition explosion rate camera with varifocal lens
- 3 megapixel CMOS sensor
- 5.0-50mm Motorized Lens
- CSA / FM / ATEX / IEC approvals
- IP66 waterproof / dustproof



IP CCTV Network Monitors



Part # LCDI-xxIP

- Doesn't require direct computer (video card) hook-up
- Able to recognize up to 8-cameras on same network
- Only requires Ethernet
- 1080 x 1920
- VESA pattern for wall mounting
- Available in 24", 32", 42", and 55"



CCTV FSM LCD Monitors



Part # FSM Series

- HDMI, VGA, BNC, supports TVI, AHD, CVI
- 3D comb filter/3D de-interlace
- LED illuminated panel
- Desk stand included (VESA mountable)
- Available in 10.1", 21.5", 32", 43", and 55"



ILLUMINATE YOUR PROJECTS WITH EB HORSMAN'S EXPERT LIGHTING SOLUTIONS

At E.B. Horsman & Son, we offer comprehensive lighting solutions that enhance both the functionality and aesthetics of any space. Whether you're illuminating a residential home, commercial building, or industrial facility, our expert team provides tailored lighting designs that prioritize energy efficiency, innovation, and quality. From LED retrofits and smart lighting systems to customized lighting controls, we ensure that every project meets the highest standards.

WHAT WE OFFER

- Reliable, Quality Name Brand Products
- Energy Audits & Retrofit Analysis
- Layout & Design Software
- ASHRAE Building Code Compliance (including 3rd party verification)
- LED Roadway Lighting Solution Builder
- Utility Incentive Programs
- Lighting Controls & Building Automation Systems

**TALK TO ONE OF OUR LIGHTING SPECIALIST AT
LIGHTING@EBHORSMAN.COM**

ASK US ABOUT OUR LED LIGHTING GUIDE



EV CHARGING SOLUTIONS FOR HOMES, BUSINESSES AND BEYOND

Looking to expand into the EV charging market? E.B. Horsman & Son is your ideal partner! We offer a comprehensive range of top-quality charging infrastructure products, including EV chargers, load-sharing devices, and accessories. With our extensive network and expertise, we ensure prompt delivery, competitive prices, and exceptional customer service. Whether you're a homeowner, business owner, or installer, we have the solutions to meet your EV charging needs!

EV CHARGING SERVICES

- Product Recommendations
- Design Support
- Quotations
- Training/Education
- Incentive Guidance

**CONTACT US TODAY AT
EVCHARGING@EBHORSMAN.COM**



E.B. HORSMAN PROCESS, AUTOMATION & CONTROLS (PAC) SPECIALISTS

E.B. Horsman’s dedicated PAC division combines our full line of process, automation, industrial controls, and motion systems with experts to support your industrial needs. This unique team of technical experts helps engineers and technicians optimize design and specification while seamlessly managing parts inventory, logistics, payables and more.

INDUSTRIAL COMMUNICATION AND NETWORKING

E.B. Horsman provides and supports a full range of Siemens industrial communication and networking products including unmanaged/ managed switches, wireless, security, connectivity and remote access solutions. With complimentary solutions from other manufacturers, we can help to optimize utilization of the data generated in your facility and make sure that the Operational Technology (OT) and Information Technology (IT) networks seamlessly interact.

Talk to a specialist today about your Industrial Communications & Networking needs at GETPAC@ebhorsman.com

SUPPLIERS WE WORK WITH

SIEMENS



CABLE TABLE

NETWORK	RATE (Mb/s)	CABLE	DISTANCE (m)
10Base-T	10	UTP Cat3	100 link
10Base-FL	10	MM Fiber	2000
10Broad-36	10	RG-59 or RG-5 coax	3600
100Base-TX	100	UTP Cat5	100
100Base-VG	100	UTP Cat3	100
100Base-FX	100	MM Fiber	2000
100Base-FX	100	SM Fiber	20000
100Base-SX	100	MM Fiber	500
1000Base-SX	1000	MM Fiber	250+
1000Base-LX	1000	MM Fiber	500+
1000Base-LX	1000	SM Fiber	20000
1000Base-T	1000	UTP Cat5e	100
1000Base-TX	1000	UTP Cat6	100
10GBase-S	10G	MM	26 to 300
10GBase-L4	10G	MM and SM	300 to 10000
10GBase-L	10G	SM	10000
10GBase-E	10G	SM	40000
10GBase-CX4	10G	Parallel Coax	15
10GBase-T	10G	UTP Cat6A	100
10GBase-SR	10G	OM2, OM3 or OM4 Fiber	82 to 400
10GBase-LRM	10G	OM2, OM3	220
10GBase-LX4	10G	OM2, OM3	300

NOTES



E.B.HORSMANDATACOM

Data Communications & Network Division

Locations

British Columbia:

Bunaby | Campbell River | Courtenay | Cranbrook | Dawson Creek |
Duncan | Kamloops | Langley | Parksville | Penticton | Prince George |
Richmond | Surrey | Terrace | Vernon | Victoria | Williams Lake

Alberta:

Calgary | Edmonton

Saskatchewan:

Saskatoon

Head Office:

Surrey

Corporate Divisional Offices:

Port Kells | Calgary | Edmonton

Distribution Centres:

Surrey | Edmonton

Download Guide

